

# Trombone Scales

D



G



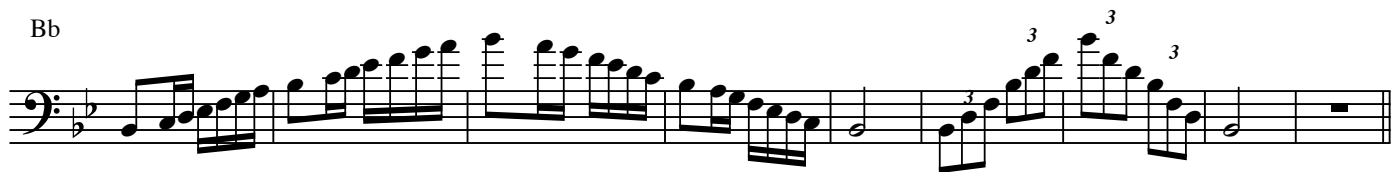
C



F



Bb



Eb



Ab



Db



Chromatic



Commissioned by John Whitwell in loving memory of  
his father, John Harvey Whitwell (1920-1993).

# AMAZING GRACE

(for concert band)

BONE 1

FRANK TICHELI

*Poco rubato*

6 2 9 *Slower, senza rubato* 8 17 (*Tpt. solo*)

*rit.*

25 *p*

33 *mf*

39 *p* 43 *mf* *rit. poco* *mp a tempo* 2

2 *pp* *p* *rit. poco*

*a tempo* (*Trb. 3*) *mp* (*Trb. 2*) *mp* 64 *mf* *rit. poco* *mf a tempo* *pp*

*Play* 70 *mf* *rit.* *p a tempo* 74 *mp* 4

83 *Broadly* *f* *rit. poco* *rit. molto*

*distinct* 3 *ff* *a tempo* *mf* *ff* *mf* *p*

104 *p* *a tempo* *ppp* *Lunga*

2 *one only* *rit. mp*

Commissioned by John Whitwell in loving memory of  
his father, John Harvey Whitwell (1920-1993).

# AMAZING GRACE

(for concert band)

BONE 3

FRANK TICHELI

*Poco rubato*

6 2 9 *Slower, senza rubato* 8 17 *(Tpt. solo)* 8

*rit.*

*(Trb. 2)* *p* *cresc.*

*Play* *mf* *p* 39 *(Trb. 2)* *p* *mf* *cresc.* *rit. poco*

*Play* *mp a tempo* *p* 47 *(Trb. 2)* *mp* 2

*(Trb. 2)* *p* 56 *(A. Sax., Hrn.)* *rit. poco* *mp* *a tempo* *Play* *mp*

64 *rit. poco* *mf a tempo* *rit.*

74 *p a tempo* *cresc.*

*rit. poco* 83 *Broadly* *rit. molto*

*(mp)* *f*

*a tempo* *distinct* 3 *ff* *mf* *ff* *mf* *p*

2 *(Trb. 2)* *rit. mp* 104 *Lunga* *p a tempo* *ppp*

# Symphonic Dance No. 3

## "FIESTA"

1st Trombone

ILLINOIS WESLEYAN  
UNIVERSITY BANDS

CLIFTON WILLIAMS

**Drammatico**

*f* *fp < sf* *f* *fp < sf* *f*

*fp < sf* *f* *fp < sf* *f* *fp < sf* *f* *fp < sf* *f*

*marcato*

(A) **Allegro vivo**

*sf* *p*

(B)

(C)

*1* *7*

*rall.*

*f*

1st Trombone

140 *f*

143 *f*

166

191 *mp*

10 *Sostenuto* (♩ = ♩) 8

191 *mp*

Con Islancio (♩ = 144) 14

228 (+ Picc., Flts.) 9 *ff sostenuto*

241

*p subito* *ff*

# VARIATIONS

ON A KOREAN FOLK SONG

C-4/70  
ILLINOIS WESLEYAN  
UNIVERSITY BANDS

JOHN BARNES CHANCE

3rd Trombone

Con moto (♩ = 96)

(Picc., Flts., Clts.)



poco a poco rall.

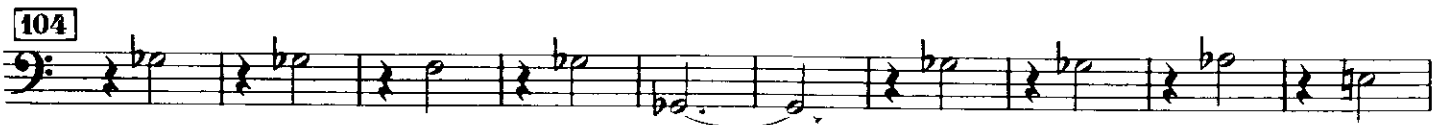


Vivace (♩ = 132)

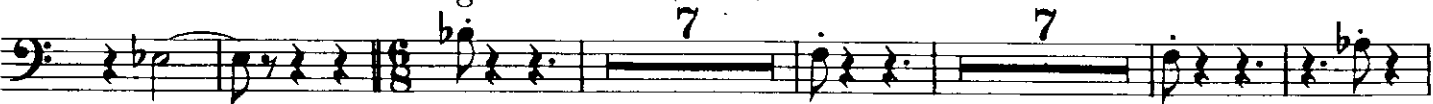


Larghetto (♩ = 72)

(+ Flts.)



Allegro con brio (♩ = 144)



# THE HOUNDS OF SPRING

1

1st Trombone

A Concert Overture for Winds

ALFRED REED  
(1980)

Allegro con brio

*ff* *marc.* *marc.* *f-sub.* *f-sub.* *p* *p* *cresc.* *f* *ffz* *mp* *1 open* *f* *ff* *sim.* *sffz* *f* *sffz* *low Cls.* *p* *Meno mosso* *poco a poco allarg. - - - molto* *88 Hns. 1,3* *106* *114 Broadly (but with motion)* *98 Molto moderato ed espressivo* *121* *128* *135 A tempo (Broadly)* *allarg.* *pp* *mf* *f* *mf* *p*

# THE HOUNDS OF SPRING

1

2nd Trombone

A Concert Overture for Winds

ALFRED REED  
(1980)

**Allegro con brio**

*ff*

*marc.*

*f*

*f*

*p* *mp* *cresc.* *f* *ffz*

*f*

*ff* *sim.*

*sfz* *f*

*sfz* *p*

*88* Hns. 2, 4 *Meno mosso* *poco a poco allarg. ... molto* Bsn., T. Sax.

*106* *98* **Molto moderato ed espressivo** *114* **Broadly (but with motion)** *121*

*p* *f > p* *p*

*128* *5* *allarg.* *135* **A tempo (Broadly)** *mf* *f* *mf* *p*

*141* *calmato* *6* *molto ritard.* *(lunga)* *149* **Tempo I° (Allegro con brio)** *Soli.* *p*