

French Horn Scales

A

D

G

C

F

Bb

Eb

Ab

Chromatic



This sheet music displays ten French Horn scales, each on a single staff in treble clef. The scales are: A major (one sharp), D major (two sharps), G major (one sharp), C major (no sharps or flats), F major (one flat), Bb major (two flats), Eb major (three flats), Ab major (four flats), and a Chromatic scale. Each scale is presented in two directions: ascending and descending. The ascending lines feature various triplet markings (indicated by a '3' above the notes) to facilitate technical practice. The descending lines are straightforward. The chromatic scale is divided into two staves, one for the ascending half and one for the descending half, covering the full range of the instrument.

Commissioned by John Whitwell in loving memory of
his father, John Harvey Whitwell (1920-1993).

AMAZING GRACE

(for concert band)

RN 1

FRANK TICHELI

Poco rubato

9 *Slower, senza 8 rubato* 17 *one only*

25 *tutti* 33 *f* 39 *mf*

43 *rit. poco mp a tempo* 47 *p*

56 *rit. poco a tempo mp*

64 *rit. poco mf a tempo pp mf rit.*

70 *a tempo p mp p cresc.*

83 *rit. poco Broadly f₁ 3*

91 *rit. molto a tempo ff espress.*

99 *2 one only rit. mp p a tempo ppp Lunga*

Symphonic Dance No. 3

"FIESTA"

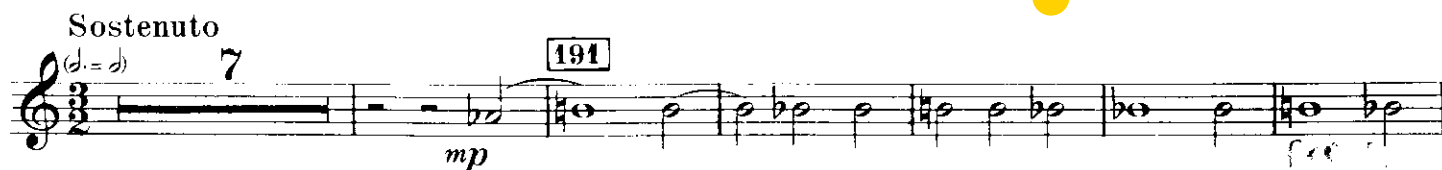
1st Horn in F

CLIFTON WILLIAMS

Drammatico



1st Horn in F



Meno mosso

1st and 2nd Horns in F

98 Molto moderato ed espressivo

poco a poco allarg. . . . molto

Musical score for 1st and 2nd Horns in F, measures 98 to 186. The score includes various musical notations such as notes, rests, dynamics (*p*, *mf*, *f*, *pp*, *ppp*, *mp*, *ff*), articulations (accents, slurs), and performance instructions (*div.*, *allarg.*, *molto ritard.*, *f marc.*). Measure numbers 98, 106, 114, 121, 128, 135, 141, 149, 157, 170, and 186 are indicated. The key signature changes from one flat to two flats. The time signature changes from 4/4 to 3/4 and back to 4/4. The score is divided into sections by yellow highlights.